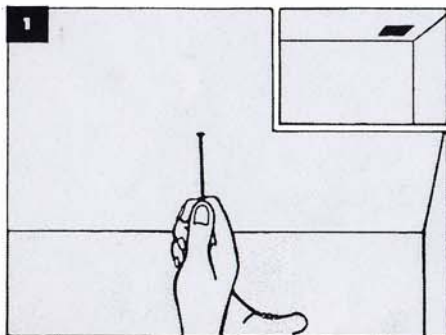


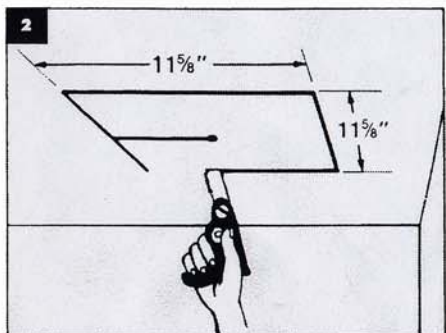
INSTALLATION SUGGESTIONS/UP-DUX® CEILING VENTS

MODEL LP-101

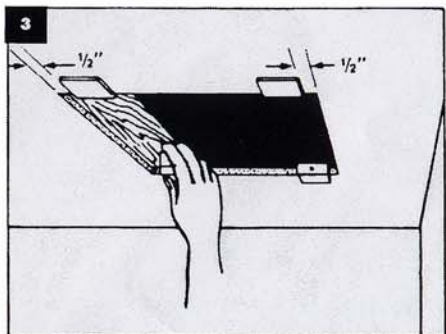
Reading these instructions before starting the installations will help make the job go easier.
NOTE: Installations can usually be made from below and attic work shouldn't be necessary!



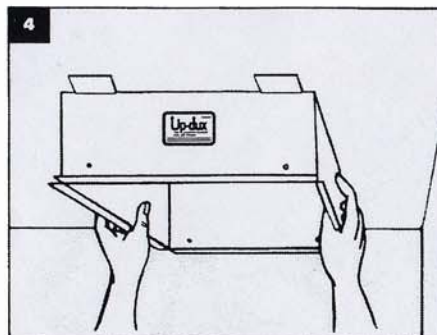
For best air circulation, units should be placed diagonally away from incoming air registers 18 to 24 inches from outer house wall. Within the area of the installation location selected, drill a small hole in the ceiling just a few inches from the nearest ceiling joist. Through this hole, with a small thin probe such as can be formed from a wire coat hanger, check to be certain you will avoid any obstruction within the 7-1/2" minimum attic height clearance limit.



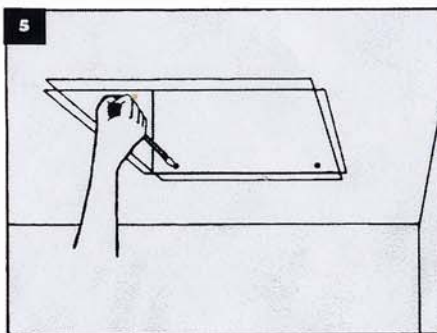
From the probe hole, cut to the edge of, but NOT into the ceiling joist, Next, using the joist as your guide, make a smooth cut 11-5/8" along its length as one of the sides of the square opening into which your unit will be installed. From each end this base line cut, measure out and away from the joist a distance of 11-5/8", recheck all of the measurements and right angles. Now its time to carefully scribe the cutting lines and then cut out the square.



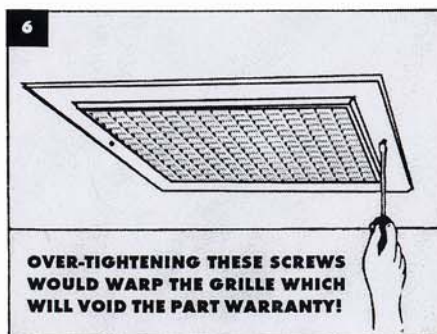
With each unit there are four 2" wide "L" shaped installation clips, pre-punched with screw holes. One clip is required to support each corner of the unit. The front and back product panels are also pre-punched with matching guide holes. Position each clip with its edge exactly 1/2" from the corner of the ceiling opening. With the bottom of the "L" held firmly upward, press the top edge forward and downward to match the thickness of the drywall ceiling panel.



Being careful not to damage the aluminum lid, slide the unit into the opening—with the hinged end toward the home's outside wall, as shown. Now, from the plastic envelope packed with the unit, remove the four 1/4" mounting clip screws.



Very carefully, align the holes in the installation clips with the guide holes in the unit's front and back panels. Insert the mounting clip screws to secure the unit in position.



Using the 1/2" long screws provided, mount the grille in position on the unit, taking care to allow only minimum tension between the mounting screw heads and the grille.

Note: A slide-in Therma-Panel™ has been included with each grille for your use during periods when the cooler is not in operation. Both the grille and the Therma-Panel™ may be cleaned with a mild detergent in COOL water. (They are NOT "dishwasher-proof!")

**OVER-TIGHTENING THESE SCREWS
WOULD WARP THE GRILLE WHICH
WILL VOID THE PART WARRANTY!**

YOUR SATISFACTION IS MOST IMPORTANT! FOR BEST RESULTS WITH HIGH SPEED COOLER OPERATION YOU'LL NEED ONE UP-DUX® VENT FOR EACH 900 CFM OF COOLER'S NOMINAL CAPACITY. ALLOW 100 SQUARE INCHES OF ROOF-TOP OR GABLE-END ATTIC VENTING FOR EACH OF THE UP-DUX® VENTS INSTALLED!

GARAGE INSTALLATIONS ARE NOT RECOMMENDED AND, IN CERTAIN AREAS, ARE NOT CODE-APPROVED!